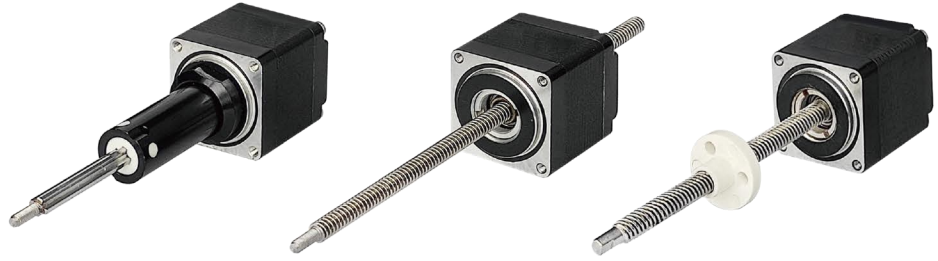


28000 SERIES SIZE 11 LINEAR STEPPER ACTUATOR



Size11:28mm Hybrid Linear Stepper Motor(1.8°Step Angle)											
Captive	Non-captive	External Lin.	Wiring	Rated voltage	Rated current	Resistance /phase	Inductance /phase	Power consumption	Temperature rise	Weight	Insulation resistance
28CA4(X)-V	28NA4(X)-V	28EA4(X)-V	Bipolar	2.1V	1A	2.1Ω	1.5mH	4.2W	75°C	119g	20MΩ
				5V	0.42A	11.9Ω	6.7mH				
				12V	0.18A	68.6Ω	39mH				

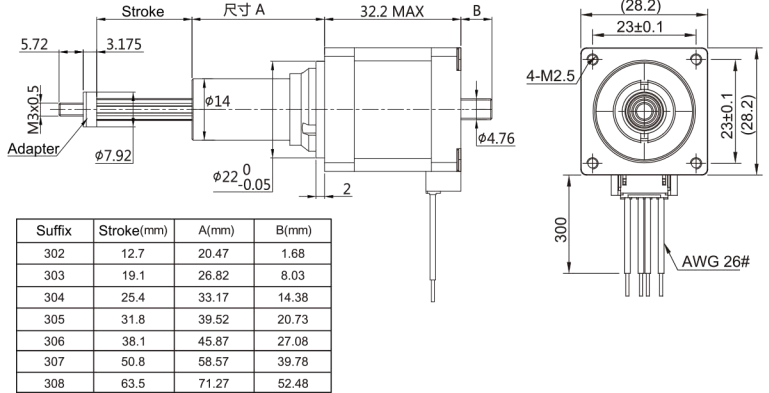
Code	Leadscrew Thread Dimension		
	Diameter	Step	Lead
7	3/16	0.000125	0.026
9	3/16	0.00025	0.05

(Units:Inches)

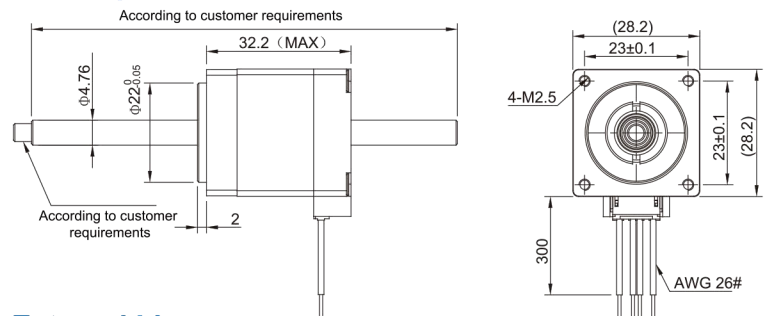
Code	Leadscrew Thread Dimension		
	Diameter	Step	Lead
3	3/16	0.0005	0.1
1	3/16	0.001	0.2
2	3/16	0.002	0.4

(Units:Inches)

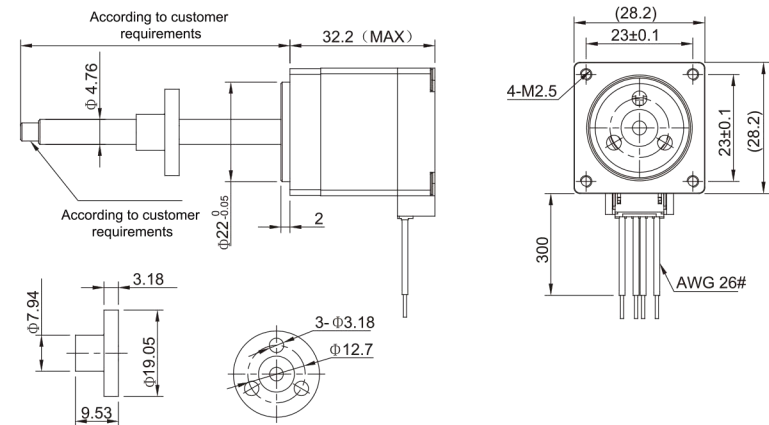
Captive



Non-Captive



External Linear



Force vs.Pulse Rate

Chopper drive : motor 2.1V and power supply 24V

